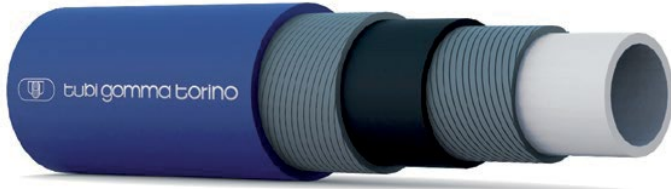




CALORFOOD D /10 | 120°C FDA L/L

FDA LONG LENGTH HOT WATER HOSE



- ✓ Potable & hot water transfer
- ✓ Industrial washing machines
- ✓ FDA 21 CFR 177.2600
- ✓ Food quality EPDM liner

APPLICATION

Delivery hose for potable hot water and detergents. Used for industrial washing machines and recommended for washdown applications in poultry farms and dairies.

TUBE

White, smooth, food quality EPDM rubber compound

REINFORCEMENT

High strength synthetic plies

COVER

Blue, smooth, EPDM rubber compound, resistant to abrasion, ozone and weathering (other colours on demand).

KEY PERFORMANCE

Temperature:	-40°C to +120°C
Range	-40°F to +248°F
Working Pressure:	10 bar
Bursting Pressure:	30 bar

ID		OD		WEIGHT	WP		BP		COIL LENGTH
mm	inch	mm	inch	kg/m	bar	psi	bar	psi	m
6	1/4	12	15/32	0,13	10	150	30	450	MAX 100
8	5/16	15	19/32	0,17	10	150	30	450	MAX 100
10	13/32	17	43/64	0,18	10	150	30	450	MAX 100
12	15/32	19,5	49/64	0,23	10	150	30	450	MAX 100
13	1/2	23	29/32	0,25	10	150	30	450	MAX 100

Other diameters, pressure ratings are available on request. Technical data, structures and polymers are subject to change without notice.

BRANDING

TGT CALORFOOD W.P. 10 BAR FDA ITALY

