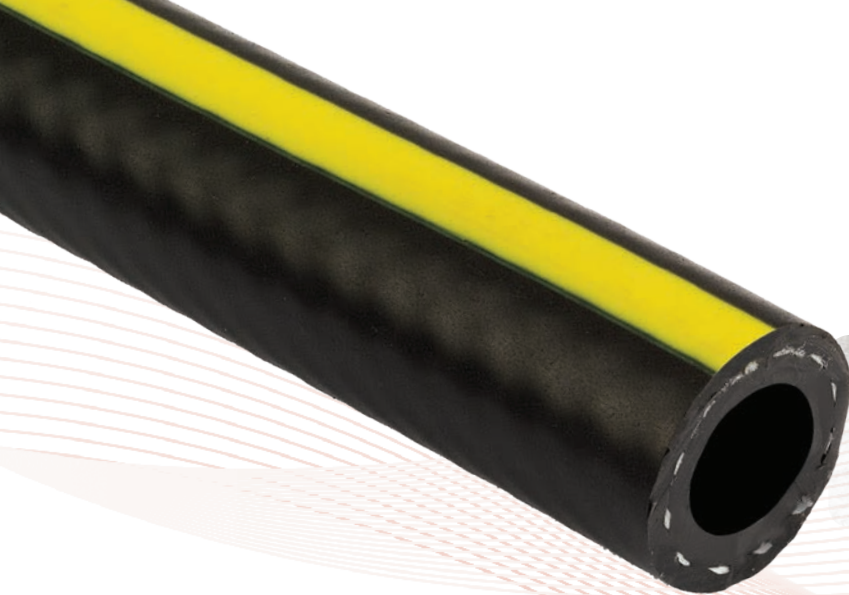




**ifpp**  
industrial fluid power products



#### Also Available

- LAH - Lightweight Air Hose
- CMP - Compressor Hose
- ASH - Agricultural Spray Hose
- HN - Clear Braided PVC Hose



## GPA

### General Purpose Air Hose

Manufactured from a compound containing nitrile, offering excellent flexibility and kink resistance, the GPA range of multi-purpose flexible polyester reinforced PVC hose is ideal for general workshop use and air tools. Minimum frictional loss is achieved by the smooth bore.

#### Applications

The GPA range is ideally suited to compressed air applications in the industrial, construction and automotive sectors.

#### Construction

A high quality PVC core is bonded to a nitrile/PVC alloy cover encapsulating high tensile polyester fibres.

#### Colour

Standard - Black with Yellow Stripe

Other colours available subject to minimum order quantity

#### Temperature Range

-10°C to +60°C

In accordance with BS EN ISO 5774

#### Size Range

3/16" to 1"

#### Standard Length

30m and 100m Coils

Other lengths available subject to minimum order quantity

#### Special Features

- Tough, durable, excellent flexibility and kink resistance
- Outstanding resistance to the effects of weather
- Minimum frictional loss is achieved by the smooth bore
- Excellent chemical resistance
- Custom print on the strip subject to MOQ

# GRIFLEX

hose & ducting solutions

VAT: 472709865

Unit 1&2 Millshaw, Leeds, LS11 0LX, UK



sales@ifpp.co.uk



www.ifpp.co.uk



#### GPA - General Purpose Air Hose

Product Ref.	Internal Dia. Inches	Internal Dia. mm	External Dia. mm	Wall Thickness Overall mm	Weight kg/m	Min. Bend Radius mm	Vacuum m of H <sub>2</sub> O	Working Pressure Bar	Coil Length Metres
GPA5/13	3/16"	5	13.0	4.0	0.17	85	20	30 / 100	30 / 50
GPA6/14	1/4"	6.3	14.0	3.85	0.19	91	20	30 / 100	30 / 50
GPA8/16	5/16"	8	16.0	4.0	0.23	104	20	30 / 100	30 / 50
GPA10/18	3/8"	10	18.0	4	0.27	117	20	30 / 100	30 / 50
GPA13/22	1/2"	12.5	22.0	4.8	0.40	143	20	30 / 100	30 / 50
GPA16/25	5/8"	16	25.0	4.5	0.45	163	20	30 / 100	30 / 50
GPA19/29	3/4"	19	29.0	5.0	0.61	189	20	30 / 100	30 / 50
GPA25/37	1"	25	37.0	6	0.93	241	20	30 / 100	30 / 50

All sizes are nominal and normal manufacturing tolerances apply.

Special Sizes are available on request but may be subject to Minimum Order Quantities and Leadtimes.

- (i) Maximum working pressure is based on a factor of safety of 4:1 on short term burst pressure at 20°C. If the temperature increases, please refer to the temperature pressure charts.
- (ii) Lengths detailed above are as standard, however variations may be available subject to minimum order quantities. Weights are approximate dependent upon working tolerance and density of materials.
- (iii) Bending diameter information is intended as a guide to the minimum bend radius at 20°C ambient temperature without restricting the bore. It does not mean that the hose cannot be bent below the given dimensions but restriction is likely to occur.



VAT: 472709865

Unit 1&2 Millshaw, Leeds, LS11 0LX, UK



sales@ifpp.co.uk



www.ifpp.co.uk